

HW
PSE-EVM_Hardware.SchDoc

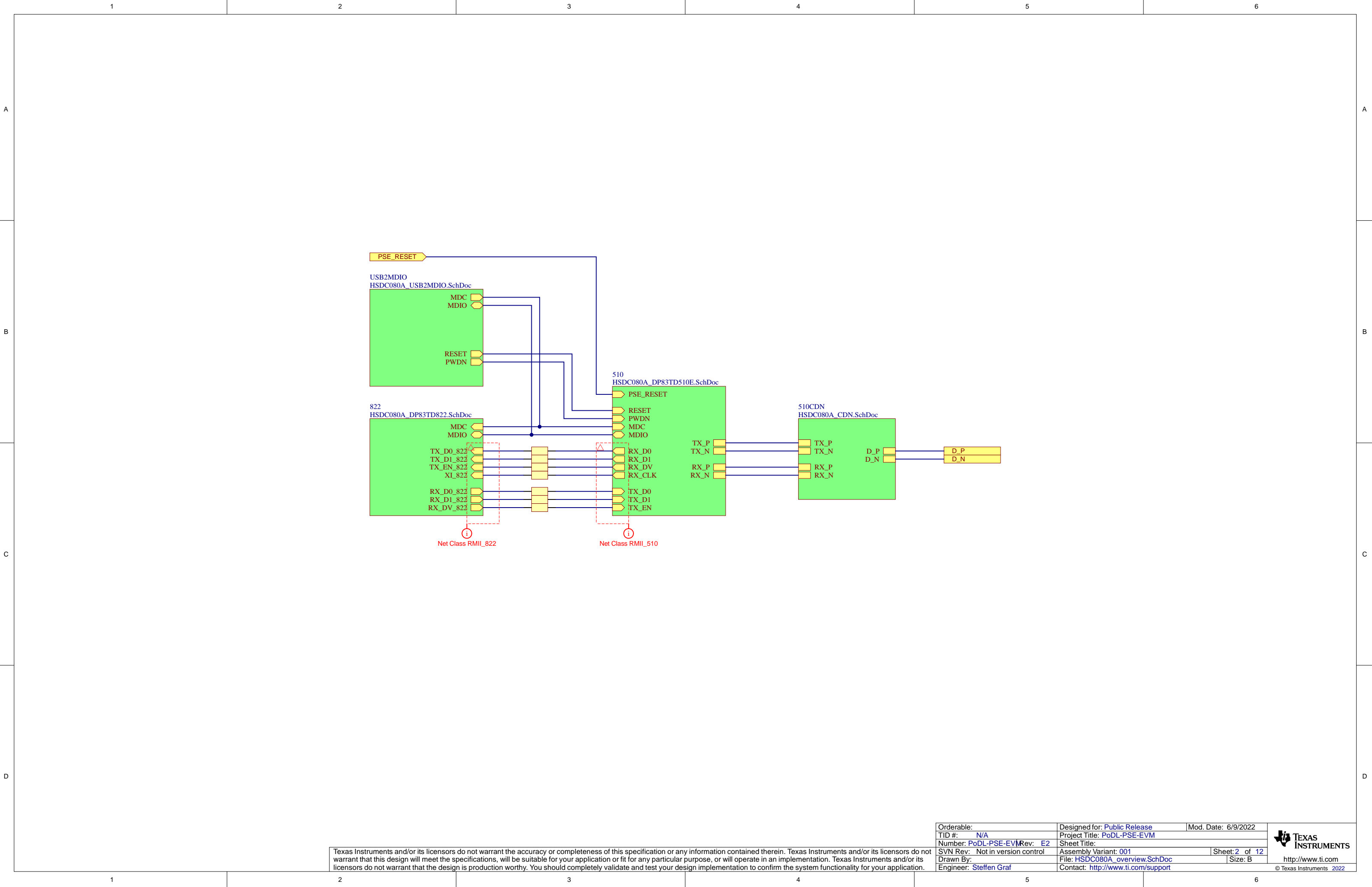
Texas Instruments and/or its licensors do not warrant the accuracy or completeness of this specification or any information contained therein. Texas Instruments and/or its licensors do not warrant that this design will meet the specifications, will be suitable for your application or fit for any particular purpose, or will operate in an implementation. Texas Instruments and/or its licensors do not warrant that the design is production worthy. You should completely validate and test your design implementation to confirm the system functionality for your application.

Orderable:	Designed for: Public Release	Mod. Date: 4/29/2022
TID #: N/A	Project Title: PoDL-PSE-EVM	
Number: PoDL-PSE-EVM Rev: E2	Sheet Title:	
SVN Rev: Not in version control	Assembly Variant: 001	Sheet: 1 of 12
Drawn By:	File: PSE-EVM-Main.SchDoc	Size: B
Engineer: Steffen Graf	Contact: http://www.ti.com/support	

TEXAS
INSTRUMENTS

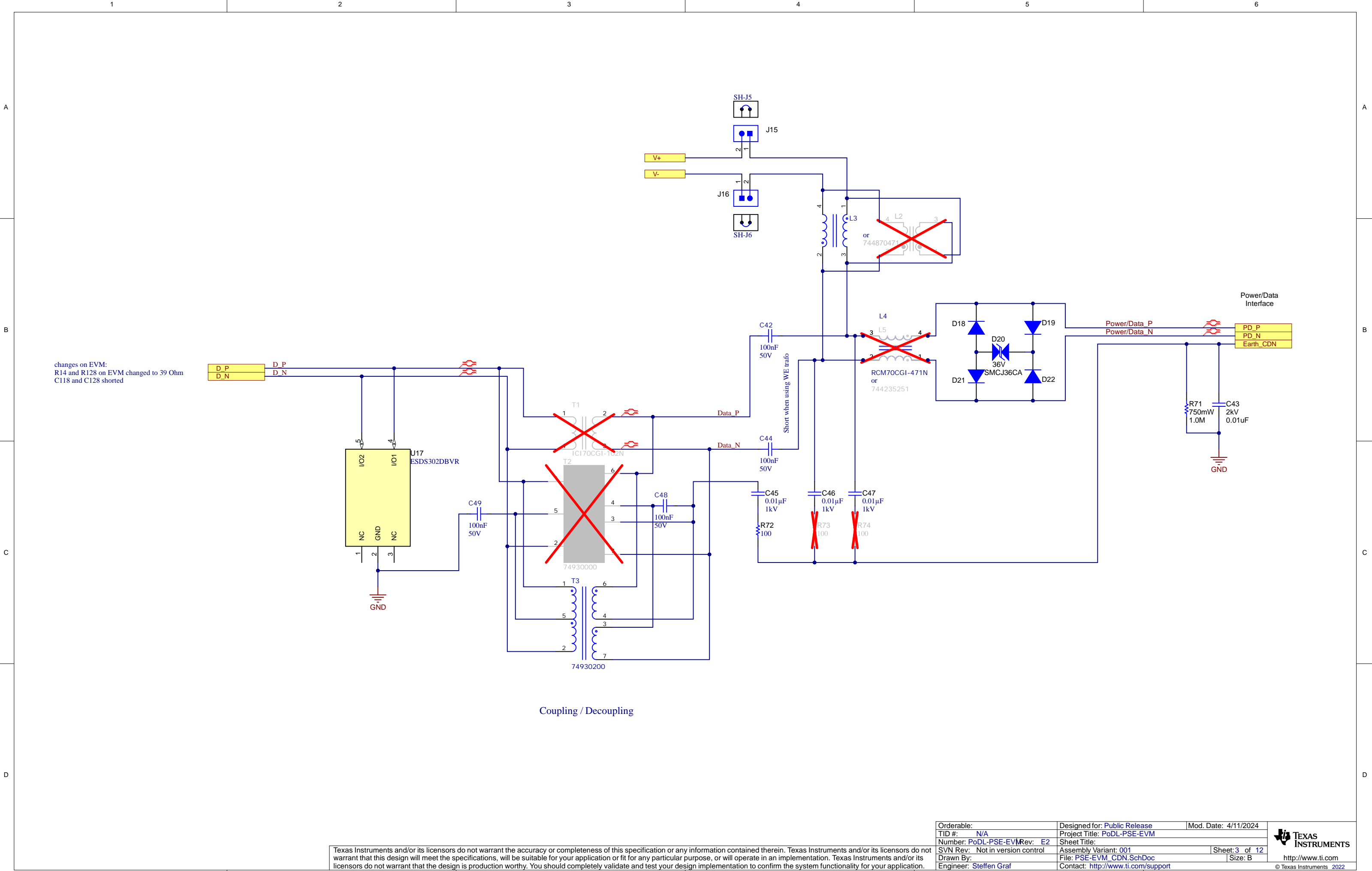
<http://www.ti.com>

© Texas Instruments 2022



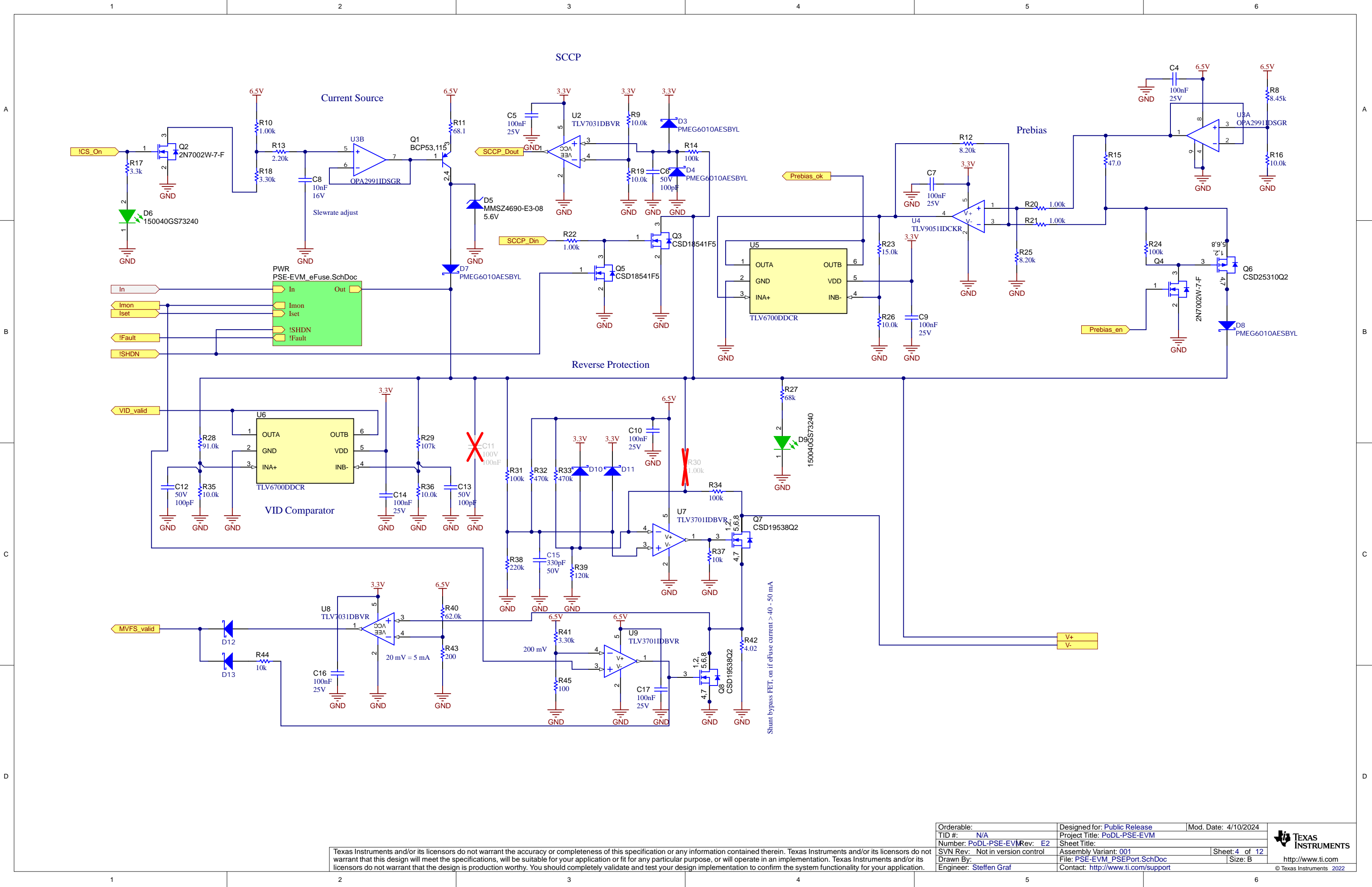
Texas Instruments and/or its licensors do not warrant the accuracy or completeness of this specification or any information contained therein. Texas Instruments and/or its licensors do not warrant that this design will meet the specifications, will be suitable for your application or fit for any particular purpose, or will operate in an implementation. Texas Instruments and/or its licensors do not warrant that the design is production worthy. You should completely validate and test your design implementation to confirm the system functionality for your application.

Orderable:	Designed for: Public Release	Mod. Date: 6/9/2022
TID #: N/A	Project Title: PoDL-PSE-EVM	
Number: PoDL-PSE-EVM	Rev: E2	Sheet Title:
SVN Rev: Not in version control	Assembly Variant: 001	Sheet: 2 of 12
Drawn By:	File: HSDC080A_overview.SchDoc	Size: B
Engineer: Steffen Graf	Contact: http://www.ti.com/support	



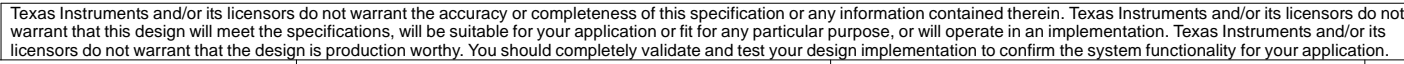
Orderable:	Designed for: Public Release	Mod. Date: 4/11/2024
TID #:	Project Title: PoDL-PSE-EVM	
Number: PoDL-PSE-EVM	Rev: E2	Sheet Title:
SVN Rev: Not in version control	Assembly Variant: 001	Sheet: 3 of 12
Drawn By:	File: PSE-EVM_CDN.SchDoc	Size: B
Engineer: Steffen Graf	Contact: http://www.ti.com/support	

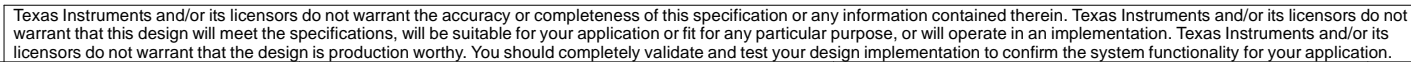
Texas Instruments and/or its licensors do not warrant the accuracy or completeness of this specification or any information contained therein. Texas Instruments and/or its licensors do not warrant that this design will meet the specifications, will be suitable for your application or fit for any particular purpose, or will operate in an implementation. Texas Instruments and/or its licensors do not warrant that the design is production worthy. You should completely validate and test your design implementation to confirm the system functionality for your application.



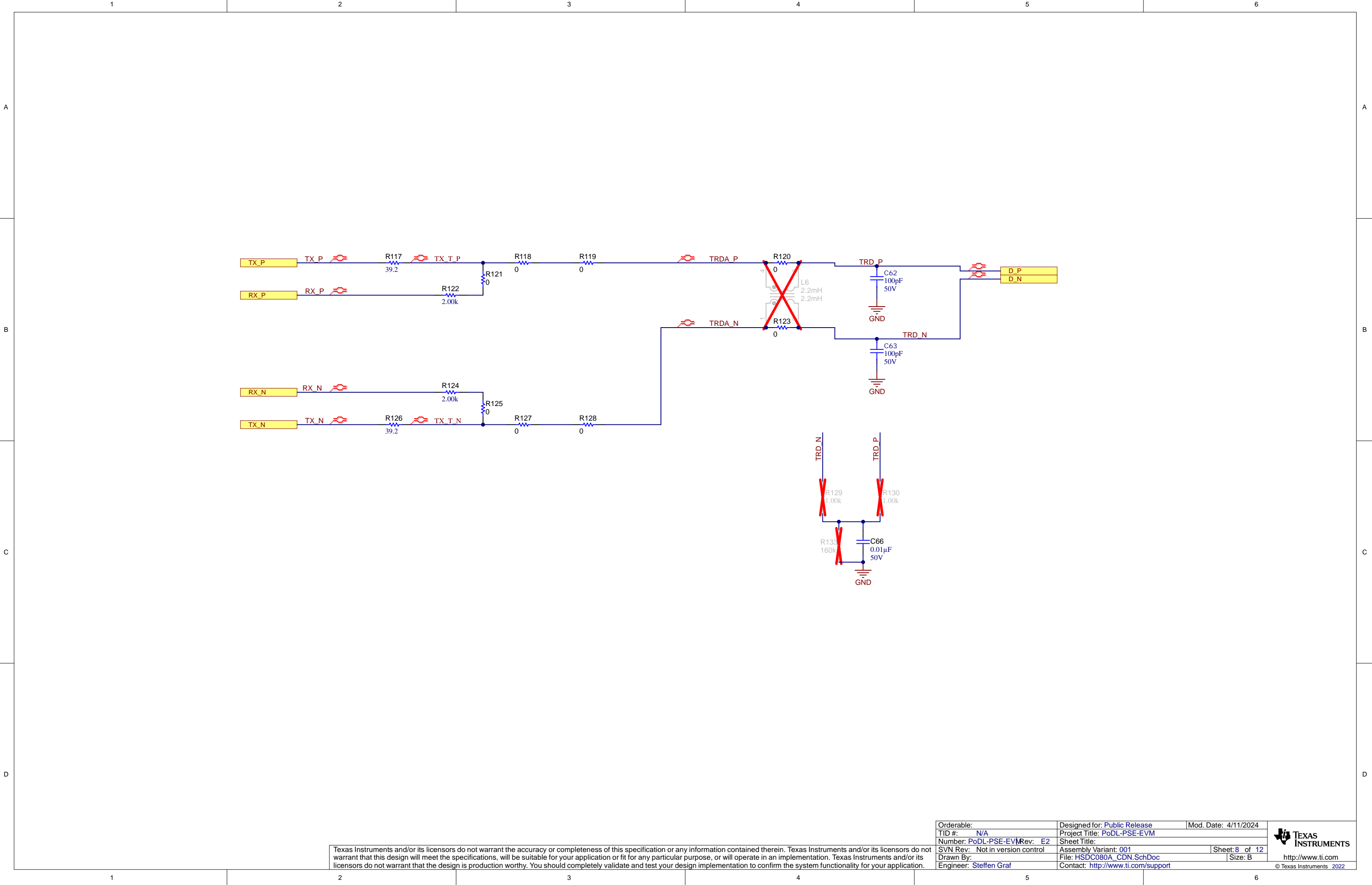
Texas Instruments and/or its licensors do not warrant the accuracy or completeness of this specification or any information contained therein. Texas Instruments and/or its licensors do not warrant that this design will meet the specifications, will be suitable for your application or fit for any particular purpose, or will operate in an implementation. Texas Instruments and/or its licensors do not warrant that the design is production worthy. You should completely validate and test your design implementation to confirm the system functionality for your application.

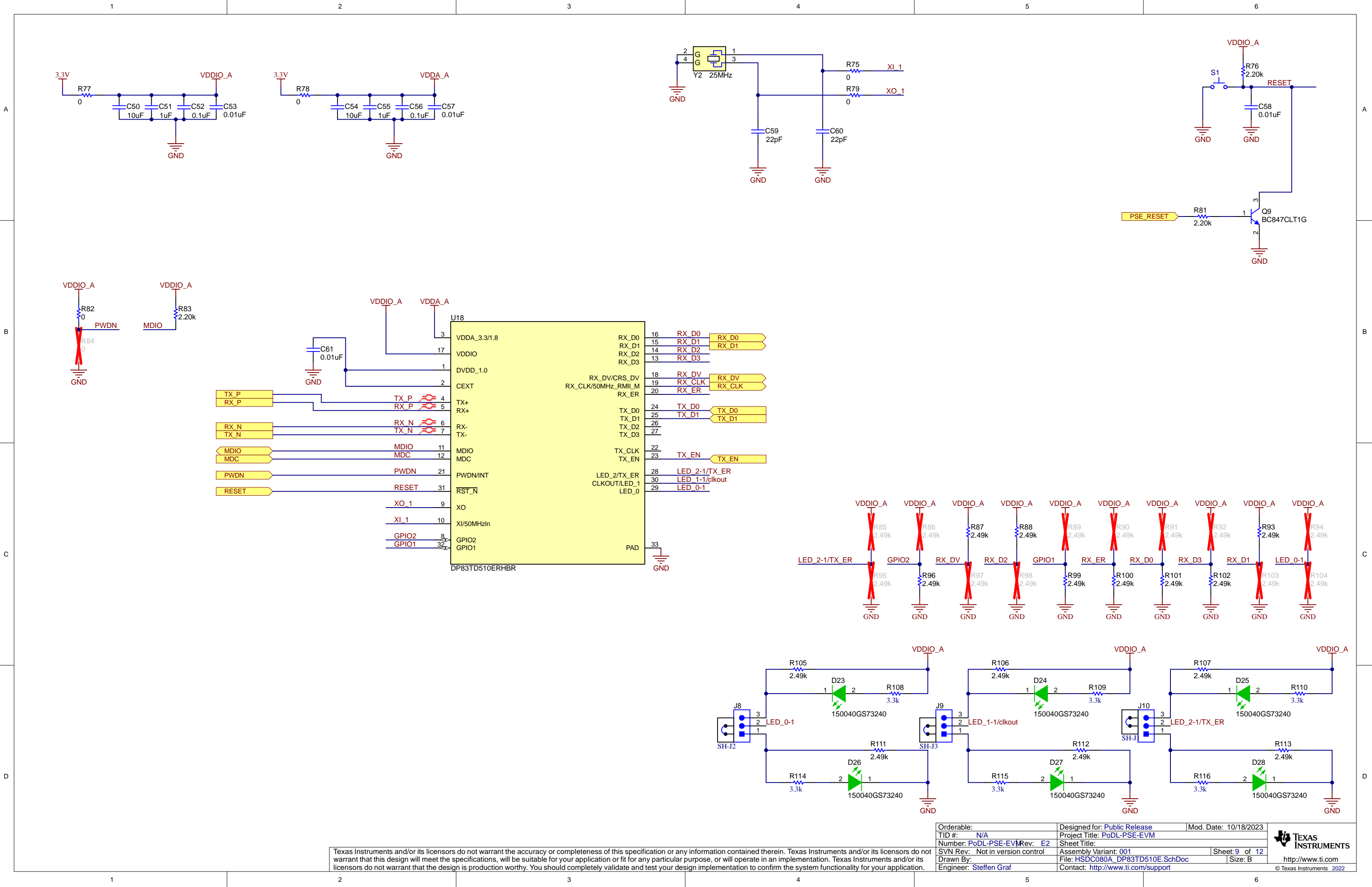
Orderable:	Designed for: Public Release	Mod. Date: 4/10/2024
TID #:	Project Title: PoDL-PSE-EVM	
Number: PoDL-PSE-EVM Rev: E2	Sheet Title:	
SVN Rev: Not in version control	Assembly Variant: 001	Sheet: 4 of 12
Drawn By:	File: PSE-EVM_PSEPort.SchDoc	Size: B
Engineer: Steffen Graf	Contact: http://www.ti.com/support	






 **TEXAS
INSTRUMENTS**
<http://www.ti.com>
© Texas Instruments 2022





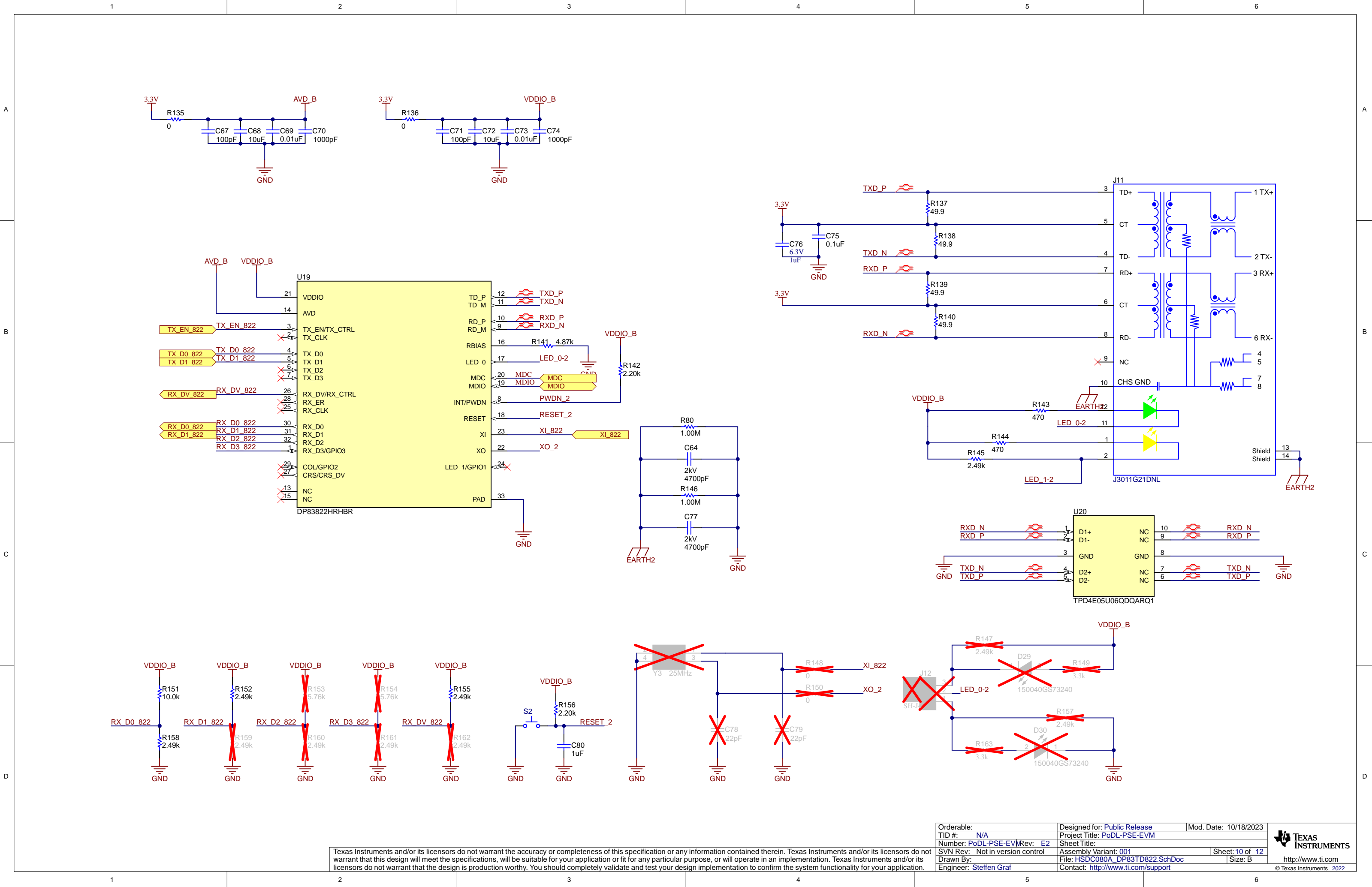
Texas Instruments and/or its licensors do not warrant the accuracy or completeness of this specification or any information contained therein. Texas Instruments and/or its licensors do not warrant that this design will meet the specifications, will be suitable for your application or fit for any particular purpose, or will operate in an implementation. Texas Instruments and/or its licensors do not warrant that the design is production worthy. You should completely validate and test your design implementation to confirm the system functionality for your application.

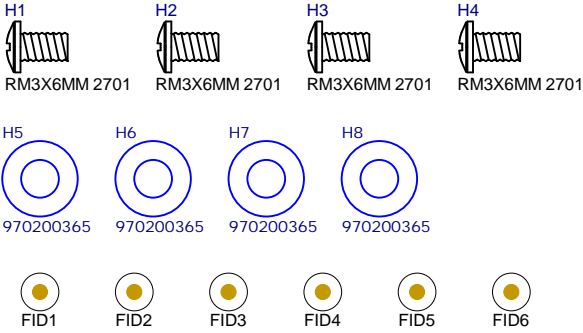
Orderable:	Designed for: Public Release	Mod. Date: 10/18/2023
TID #:	Project Title: PoDL-PSE-EVM	
Number: PoDL-PSE-EVM	Rev: E2	Sheet Title:
SVN Rev: Not in version control	Assembly Variant: 001	Sheet: 9 of 12
Drawn By:	File: HSDC080A_DP83TD510E_SchDoc	Size: B
Engineer: Steffen Graf	Contact: http://www.ti.com/support	



TEXAS
INSTRUMENTS

<http://www.ti.com>
© Texas Instruments 2022






PCB Number: PoDL-PSE-EVM

PCB Rev: E2

PCB

LOGO

Texas Instruments



CE Mark

PCB

LOGO

FCC disclaimer

PCB

LOGO

WEEE logo

LBL1

PCB Label

THT-14-423-10

Size: 0.65" x 0.20 "

ZZ1

Label Assembly Note

This Assembly Note is for PCB labels only

ZZ2

Assembly Note

These assemblies are ESD sensitive, ESD precautions shall be observed.

ZZ3

Assembly Note

These assemblies must be clean and free from flux and all contaminants. Use of no clean flux is not acceptable.

ZZ4

Assembly Note

These assemblies must comply with workmanship standards IPC-A-610 Class 2, unless otherwise specified.

Variant/Label Table	
Variant	Label Text

Texas Instruments and/or its licensors do not warrant the accuracy or completeness of this specification or any information contained therein. Texas Instruments and/or its licensors do not warrant that this design will meet the specifications, will be suitable for your application or fit for any particular purpose, or will operate in an implementation. Texas Instruments and/or its licensors do not warrant that the design is production worthy. You should completely validate and test your design implementation to confirm the system functionality for your application.

Orderable:	Designed for: Public Release	Mod. Date: 6/9/2022
TID #: N/A	Project Title: PoDL-PSE-EVM	
Number: PoDL-PSE-EVM	Rev: E2	Sheet Title:
SVN Rev: Not in version control	Assembly Variant: 001	Sheet: 12 of 12
Drawn By:	File: PSE-EVM_Hardware.SchDoc	Size: B
Engineer: Steffen Graf	Contact: http://www.ti.com/support	